



ANTRIEBSELEMENTE

V-Belt pulleys



If performance is required

www.luetgert-antriebe.de

V-BELT PULLEYS

DIN 2211 / DIN 2217

Manufacture of individual V-belt pulleys according to DIN 2211 and DIN 2217. With our optimised moulding process, we can mould any drive pulleys flexibly, quickly and without model costs and manufacture them in our in-house foundry. As a complete manufacturer, we machine the pulleys on state-of-the-art CNC machines according to the customer's specifications.

Unit weights up to 6,000 kg and geometries up to a \varnothing 2,500 mm are possible without any problems. The drives are then perfectly balanced on our Schenk balancing machines. We also carry out balancing on a sub contract basis for our customers. We also offer surface treatments such as finishing or galvanising the drive pulleys.

For TaperLock standard pulleys up to a diameter of 1,250 mm, we have an extensive stock of all common profiles (e.g. SPZ, SPA, SPB and SPC). Special designs are possible for DIN deviations, exclusive geometries, intermediate sizes or higher circumferential speeds.

Materials

- Standard material for peripheral speeds up to 40 m/s:
Cast iron EN-GJL-200 to EN-GJL-300 (GG-20 to GG-30) according to DIN EN 1561
- Alternative materials possible for higher circumferential speeds:
Spheroidal graphite iron (EN-GJS-400 to EN-GJS-800), cast steel (GS) or steel / welded constructions
- Weight-optimised special designs made of aluminium

Shaft-hub connection

- Cylindrical bore with or without keyway
- Pre machined to accommodate couplings, flanges, clamping sets or TaperLock clamping bush connections

Designs

- Arm-, plate- or solid pulley
- Double arm or double solid pulley with stiffening ribs (for heavy and wide drives)
- Split pulleys (for narrow installation situations)
- V-Ribbed pulleys / Poly-V-pulleys (compact design for smaller drives)

Mechanical processing

- Balanced as standard according to DIN 21940 in quality grade G16, G6.3 or G2.5
- All surfaces are primed to prevent corrosion
- Individual surface treatment and special ing possible



PRODUCT OVERVIEW

EXCERPT

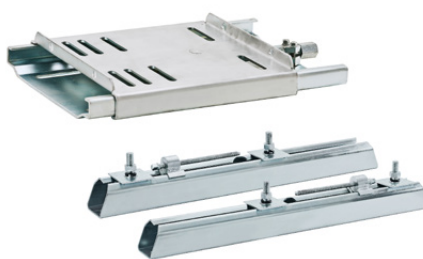
Drive pulleys

V-belt pulleys | Flat belt pulleys | Flywheels | Grid pulleys | Timing belt pulleys | Rubberized pulleys
Split pulleys | Aluminium pulleys



Supplies for drive belts

TaperLock clamping bushes | Motor mounting systems | V-belts / Drive belts | V-belt metrology | Rubber suspension units
Oscillating mountings | Tensioner devices | Foundation blocks | Shafts and rolls



More information required?

www.luetgert-antriebe.de



Lütgert & Co. GmbH
Friedrichsdorfer Straße 48
33335 Gütersloh | Germany

Phone: 05241 7407-0
vertrieb@luetgert-antriebe.de
www.luetgert-antriebe.de

MADE IN GERMANY